

# National Traffic Managers' Conference

October 2021



**Matt Blackwell**

AVP SOLUTIONS ENGINEERING

Matthew.Blackwell@wejo.com

ooo

## Agenda

Wejo data background

Connected Vehicle Data as a Solution

Using Connected Vehicle Data

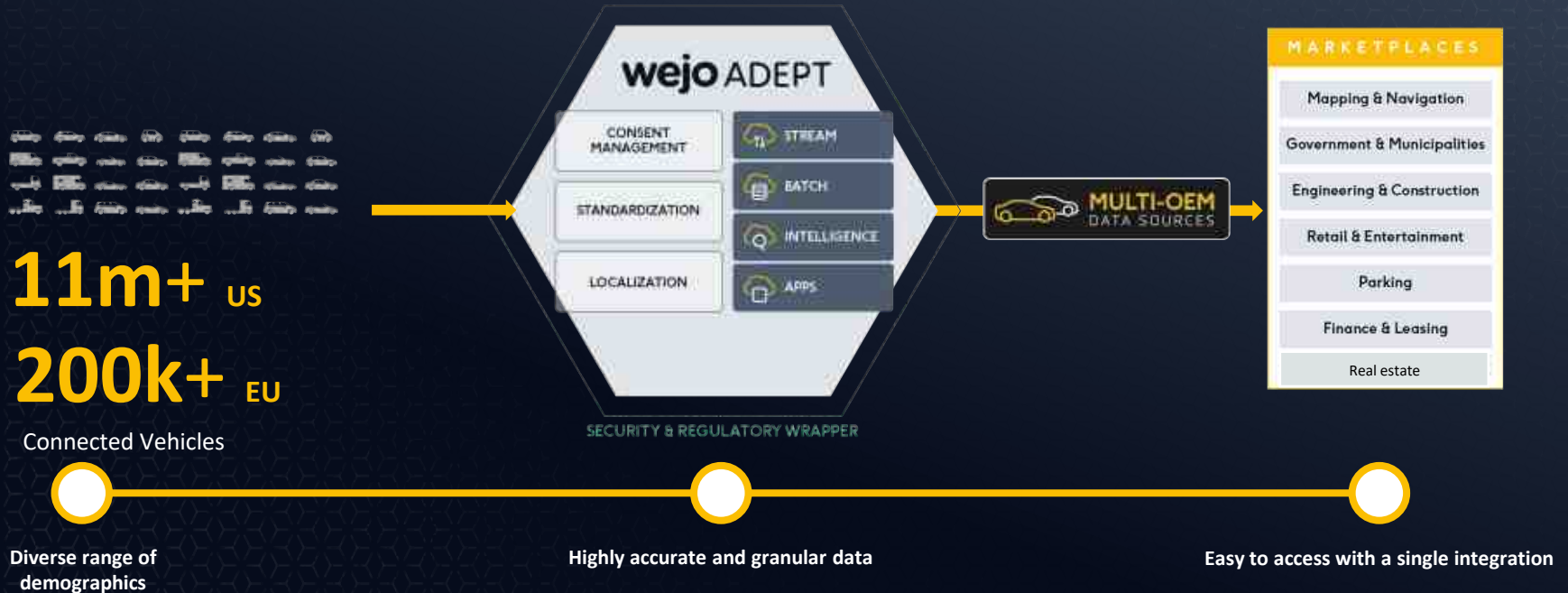
Q&A

Wejo partners with global  
auto manufacturers to create  
**mobility intelligence** that  
revolutionises the way we live,  
work and travel

000

# Wejo makes it easy to unlock the value in connected vehicle data

Wejo provides access to data curated from multiple motor manufacturers and millions of connected devices with one seamless integration



**wejo**



ooo

# Connected vehicle data accuracy



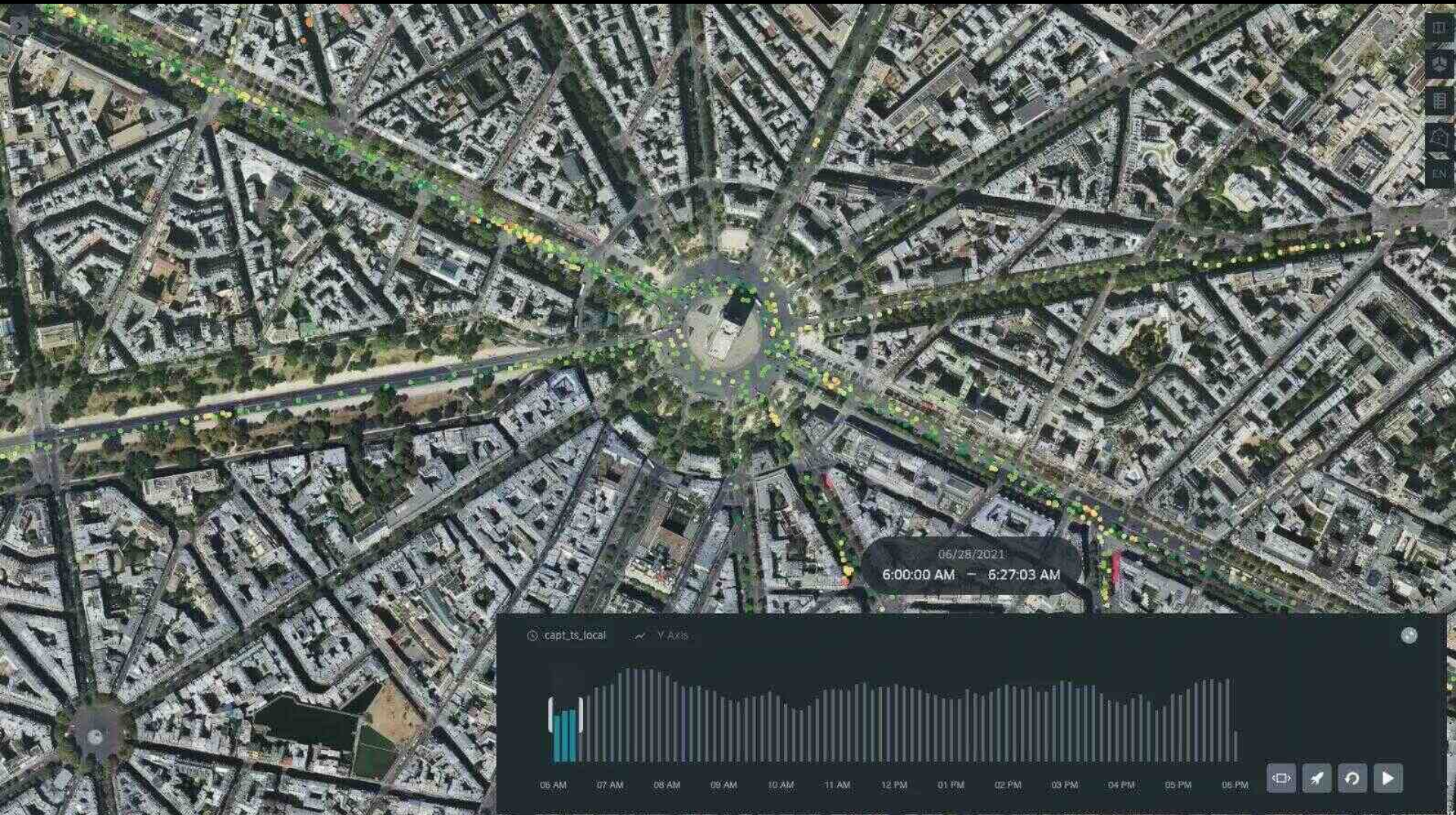
*For illustrative purposes not to scale*



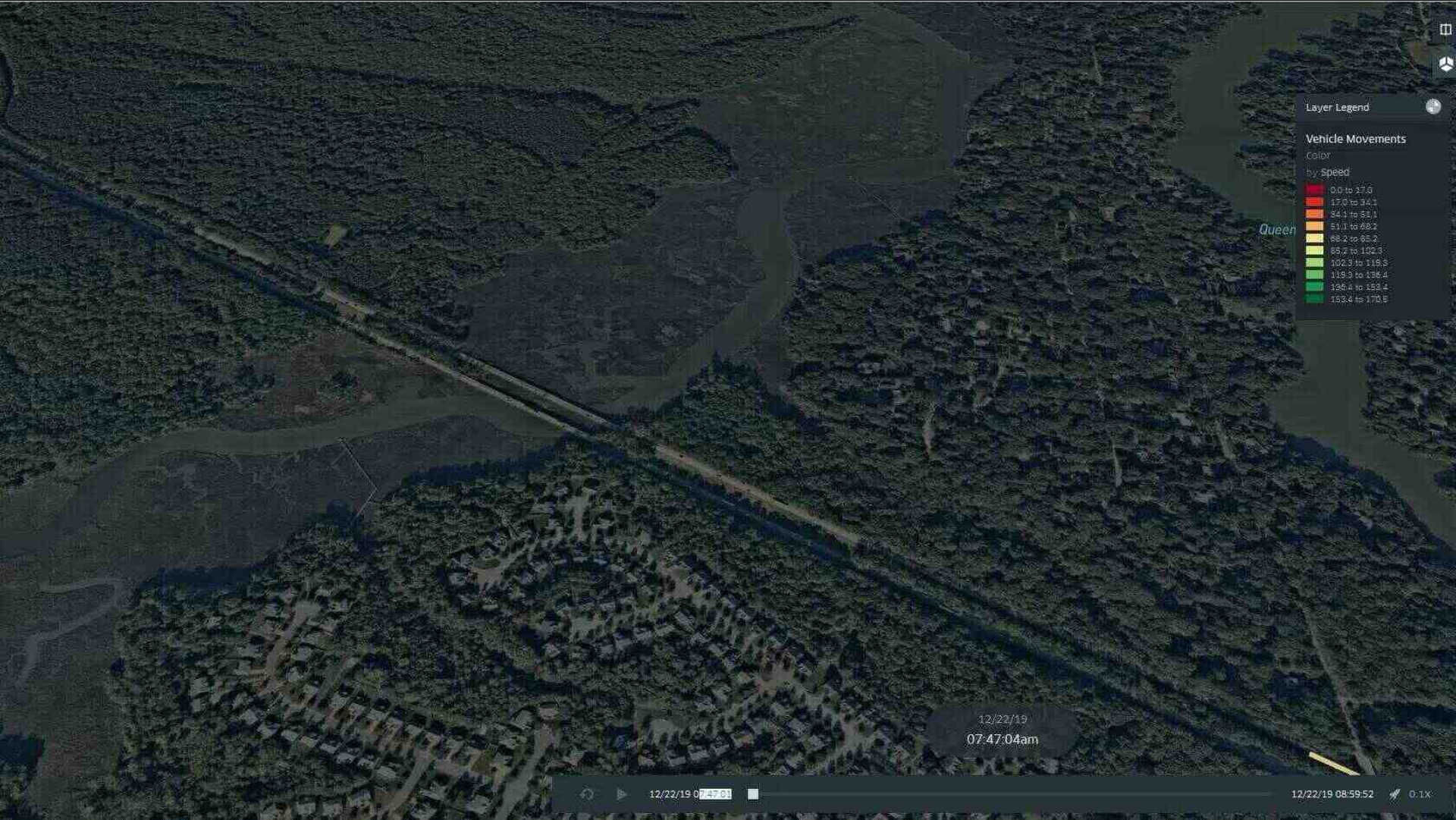
# Connected Vehicle Data as a solution

**wejo**









Layer Legend

Vehicle Movements

Color by Speed

0.0 to 17.6
17.6 to 34.1
34.1 to 51.1
51.1 to 68.2
68.2 to 85.2
85.2 to 102.3
102.3 to 119.3
119.3 to 136.4
136.4 to 153.4
153.4 to 170.5

Queen

12/22/19  
07:47:04am



# Using Connected Vehicle Data



# Our products are simple to use, secure to access and help solve mobility problems



## Driving Events

For organizations that need specific, reliable data about driver behaviors throughout their journey

### NEW FEATURES

#### **Driving Events Select**

Enhanced driving event data from a subset of vehicles, supporting environmental use cases and more!



## Vehicle Movements

For organizations that want to identify in real-time (or over time) where cars are travelling to, coming from, how they're getting there and at what speed

Delivered in real time or in historic batches within your chosen schedule



## Traffic Intelligence

For private or public sector organizations that want to understand granular traffic volumes and trends for one or more segments of the road network

Delivered in in historic batches within your chosen schedule



## Journey Intelligence

For private or public sector organizations that want to understand origin to destination journey trends and volumes across cities, POIs and waypoints

Delivered in in historic batches within your chosen schedule





# Driving Events

wejo

# Driving Events is the out-of-the-box solution that provides the data necessary to monitor segment speed, travel times, and congestion



## INCIDENT AVOIDANCE

Understand where potentially dangerous driving behaviors regularly occur utilizing **hard braking** to determine when safety measures should be implemented



## WEATHER CONDITIONS

Understand and identify areas of flooding or severe precipitation with access to unique **window wiper** and **external temperature data**



## VEHICLE OCCUPANCY

Understand vehicle occupancy levels utilizing **seatbelt status data** to understand true vehicle occupancy levels in HOV lanes



## WORK ZONE SAFETY

Monitor driving behaviour in and around work zones by leveraging **hard braking** and **hard acceleration data**, keeping construction workers safe



## PARKING INFRASTRUCTURE

Determine car park utilization and understand and prioritize if, where and when to build new infrastructure utilizing vehicle **ignition status**





A nighttime photograph of a city skyline, likely Chicago, with several prominent skyscrapers illuminated. In the foreground, a multi-lane highway shows long-exposure light trails from vehicles, indicating traffic flow. The sky is a deep blue. The text 'Vehicle Movements' is overlaid in white, with a vertical yellow line to its left.

# Vehicle Movements



**Vehicle Movement** is the solution that provides the real-time origin, destination, speed, and traffic distribution insight required to improve traffic flow and reduce congestion



#### TRAFFIC MANAGEMENT

Real-time visibility to incidents enables near instant decision making mitigating the impact of the situation and the potential subsequent rolling disruption to the rest of the system.



#### SPEED ZONE MANAGEMENT

Manage critical speed zones especially near work sites and schools. Gain instant visibility when slowdowns in the system occur. Improve traffic flow through improved speed management.



#### JOURNEY DISTRIBUTION

Gain greater understanding of the origin and destination of vehicles across the network. Improve insight into the impact traffic has on areas where infrastructure requires improvement or replacement.



#### REAL-TIME SAFETY MONITORING

Support your Vision Zero and other safety initiatives through near time visibility to safety issues. Achieve your vision of a highway system without serious injuries or fatalities.



Granular visibility of traffic from origin to destination improves tactical and strategic decision making.

**wejo**



An aerial photograph of a city skyline at sunset. The sky is a mix of orange, yellow, and blue. In the foreground, a multi-lane highway curves through the city, filled with cars whose headlights and taillights are visible. To the left of the highway is a body of water. The city is densely packed with skyscrapers of various heights and architectural styles. Some buildings have their lights on, and a construction crane is visible on the right side of the skyline.

wejo

Intelligence products

ooo

## Our products are simple to use, secure to access and help solve mobility problems

In 2021 Wejo launched its Intelligence products on the Esri ArcGIS marketplace, harnessing the power of Esri's GIS suite with data from the worlds leading and largest connected vehicle data provider.

Wejo has produced a packaged data product which has been optimised to work with ArcGIS, ArcGIS pro and ArcGIS online with a data set solely and exclusively curated from connected vehicles.



### Traffic Intelligence

For private or public sector organizations that want to understand granular traffic volumes and trends for one or more segments of the road network.



### Journey Intelligence

For private or public sector organizations that want to understand origin to destination journey trends and volumes across cities, POIs and waypoints.



X2 listings on the ArcGIS marketplace

**wejo**





**wejo**

**Thank you**

[www.wejo.com](http://www.wejo.com)



**Matt Blackwell**

AVP SOLUTIONS ENGINEERING

[Matthew.Blackwell@wejo.com](mailto:Matthew.Blackwell@wejo.com)

An aerial photograph of a city skyline at sunset. The sky is a mix of orange, yellow, and blue. In the foreground, a multi-lane highway curves through the scene, filled with cars whose headlights and taillights are visible. To the left of the highway is a body of water. The background is dominated by a dense cluster of skyscrapers, some of which are illuminated with lights. A construction crane is visible on the right side of the skyline.

# wejo

Q&A