

## Local Authority Waste Survey Results: week commencing 15 February 2021

- Results are based on a voluntary sample of Local Authorities (LAs) taken in the week commencing 15 February 2021. The sample size varies for each survey.
- Respondents are asked to compare services with a ‘normal’ period having regard to usual seasonal variations.
- Responses represent best reasonable estimates at the date and time the survey is completed, and for some Local Authorities (LAs), may be reported with a week’s lag.
- Percentages throughout this document may not sum to totals due to rounding.
- Please note that this is a revised version of this report (dated 11 March 2021). In the previous version, within the chart on ‘Changes in waste arisings: comparison to previous weeks’, the categories ‘large increase’ and ‘significant increase’ were interchanged. In the table on ‘Changes to waste arisings: most recent week’, the categories ‘+100% increase’ and ‘50-100% increase’ were interchanged. These errors have now been corrected.

### Contents

Collection Services .....	2
Collection (comparison with previous weeks) .....	2
Collection (most recent week) .....	3
Collection: reasons for service changes .....	5
Disposal Services .....	6
Disposal (comparison with previous weeks) .....	6
Disposal (most recent week) .....	7
Disposal: reasons for service changes .....	9
Staff Absence Levels .....	10
Changes in Waste Arisings (excluding withdrawn services).....	11
Waste arisings: comparison to previous weeks .....	11
Waste arisings (most recent week) .....	12

# Collection Services

## Collection (comparison with previous weeks)



\*Dates given as 'week commencing...'

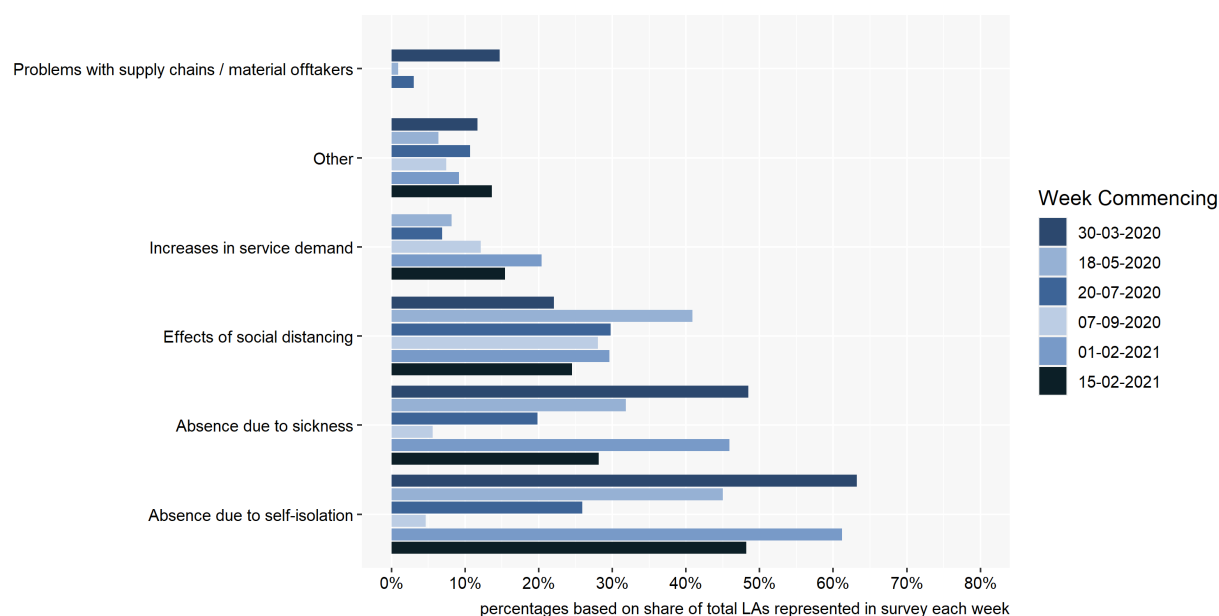
## Collection (most recent week)

	Operating normally	Minor disruption	Moderate disruption	Severe disruption	Service not available
Residual	76%	24%	0%	0%	0%
Recycling	69%	21%	9%	0%	1%
Food	72%	27%	2%	0%	0%
Garden	64%	21%	12%	0%	2%
Clinical	100%	0%	0%	0%	0%
Commercial	98%	2%	0%	0%	0%
Bulky	65%	30%	3%	0%	1%
Street Sweeping	87%	11%	2%	0%	0%
Bring Banks	80%	9%	11%	0%	0%
Fly Tip Clearance	86%	9%	5%	0%	0%

- Residual waste:** 76% of Waste Collection Authorities/Unitary Authorities (WCAs/UAs) responding to our survey in the W/C 15 February 2021 providing residual waste collections, report these to be operating as normal. This is a slight decrease compared to the last survey W/C 1 February (80%). Almost a quarter report minor disruption to this service.
- Recycling:** 69% of recycling collections provided are reported 2021 by responding authorities to be operating as normal in the W/C 15 February. This is a decrease from 75% reported in the last survey. 21% report minor disruptions, compared to 15% in the last survey.
- Food waste:** 72% of authorities responding to our survey in the W/C 15 February 2021 and who provide food waste collections, report these to be operating as normal. 27% report minor disruptions to this service. The level of availability has improved compared to the last survey, with unavailable services dropping from 4% in the W/C 1 February, to 0% in the W/C 15 February.
- Garden waste:** 64% of garden waste collection services are reported to be operating as normal in the W/C 15 February 2021, slightly down on the 69% reporting in the last survey. In total, 33% are reporting minor to moderate disruptions, which is an increase from 26% in the W/C 1 February.
- Clinical waste:** Consistently reported to be the least disrupted collection service, all (100%) clinical waste collections (generally ran in almost three quarters of authorities represented in this survey) are reported to be operating as normal in the W/C 15 February 2021. This is up from 94% in the previous survey.

- **Commercial waste:** In W/C 15 February 2021, the percentage of authorities reporting no disruption to commercial waste collections, was 98%, the same level as reported in the survey two weeks ago.
- **Bulky collections:** 65% report that bulky waste collections are operating as normal in the W/C 15 February 2021, with the majority of the remainder reporting minor levels of disruption. This is a decrease from 73% in the last survey. In total, 20% report minor or moderate disruptions to this service, up from 22% in the last survey. Levels of unavailability, however, dropped from 4% to 1% (comparing the W/C 1 February with the W/C 15 February).
- **Street sweepings:** 87% of responding authorities in the W/C 15 February 2021 report street-sweeping and litter collection services are operating as normal. This is an increase compared to the W/C 1 February, when 72% reported normal levels of operation.
- **Bring banks:** 80% of responding authorities report bring banks services they provide to be operating as normal in the W/C 15 February 2021, a slight decrease from 82% in the W/C 1 February. The level of unavailability, however, reduced to 0% (from 2% in the W/C 1 February).
- The majority (86%) of **fly-tipping clearance** collections are reported to be operating as normal in the W/C 15 February 2021, up from 80% in the W/C 1 February.

## Collection: reasons for service changes



- In the W/C 15 February 2021, the greatest reported cause for disruption to collection services by responding authorities, are the **effects of self-isolation**. This is identified by 48% of responding authorities providing waste collection services. This is a decrease from 61% in the last survey W/C 1 February.
- **Staff absence due to sickness** was reported by 28% of LAs who responding in W/C 15 February 2021, down from 46% in the last survey.
- **Absence due to social distancing** is reported to be a cause for disruption to collection services by 24% of LAs, down from 30% in the last survey.
- **Major increases in demand for services** was identified by 15% of responding authorities, down from 20% in the last survey.
- The majority of **other reasons** (reported by 14%) are referring to adverse weather conditions.



## Disposal (most recent week)

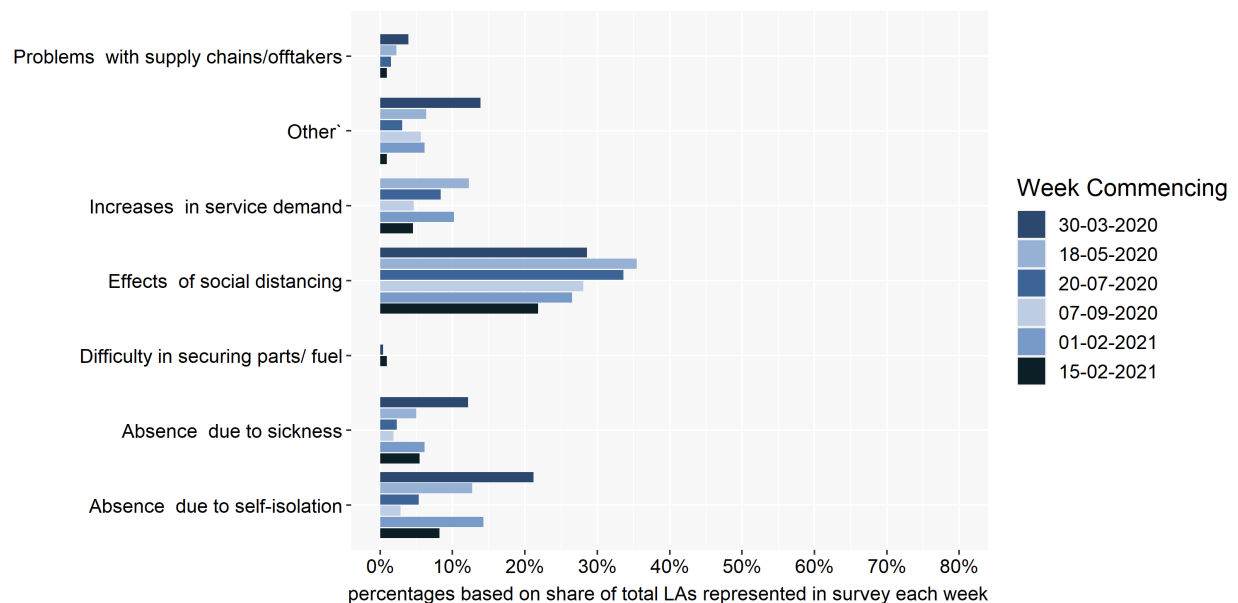
	Operating normally	Minor disruption	Moderate disruption	Severe disruption	Service not available
Landfill	96%	4%	0%	0%	0%
EFW	98%	2%	0%	0%	0%
MRF	90%	8%	3%	0%	0%
HWRC	40%	50%	10%	0%	0%
Transfer Stations	98%	2%	0%	0%	0%
MBT	100%	0%	0%	0%	0%
OWC	94%	6%	0%	0%	0%
IVC/AD	93%	7%	0%	0%	0%

- Nearly all **landfilling** disposal services (96%) utilised by authorities responding to our survey in the W/C 15 February 2021, are reported to be operating as normal. This has been a relatively consistent picture for landfill since the W/C 30th March (e.g. 97% reported normal operations in the survey W/C 1 February).
- Nearly all **Energy from Waste (EfW)** disposal services (98%) utilised by authorities responding to our survey in the W/C 15 February 2021, are reported to be operating as normal. This is a slight increase from 95% in the previous survey W/C 1 February.
- **Material Recycling Facilities (MRFs)**: 90% of responding authorities reported MRF services they utilise to be operating as normal in the W/C 15 February 2021, up from 86% in the W/C 1 February.
- **Household Waste Recycling Centres (HWRCs)**: In the W/C 15 February 2021, no authority reported their HWRCs services to be unavailable, compared to more than three in four authorities when reporting began in the W/C 30th March. Nevertheless, 50% of responding authorities reported HWRCs they run to be experiencing minor disruption, up slightly from 47% in the last survey.
- **Transfer stations**: Almost all (98%) transfer station services are reported to be continuing to operate without any disruption by authorities responding to our survey in the W/C 15 February 2021. This is an increase from 89% in the W/C 1 February.
- **Mechanical Biological Treatment (MBT)**: MBT services are reported to be operating as normal by all responding authorities where this is a disposal service in the W/C 15 February 2021, the same as in the last survey.
- **Open Windrow Composting (OWC)**: OWC services are reported to be operating as normal by almost all (94%) responding authorities in the W/C 15 February 2021, down slightly from 97% in the W/C 1 February.

- Almost all (93%) **In-Vessel Composting (IVC) and Anaerobic Digestion (AD)** services are reported to be experiencing normal operations by LAs responding to our survey in the W/C 15 February 2021. This is down slightly from 96% in the W/C 1 February.

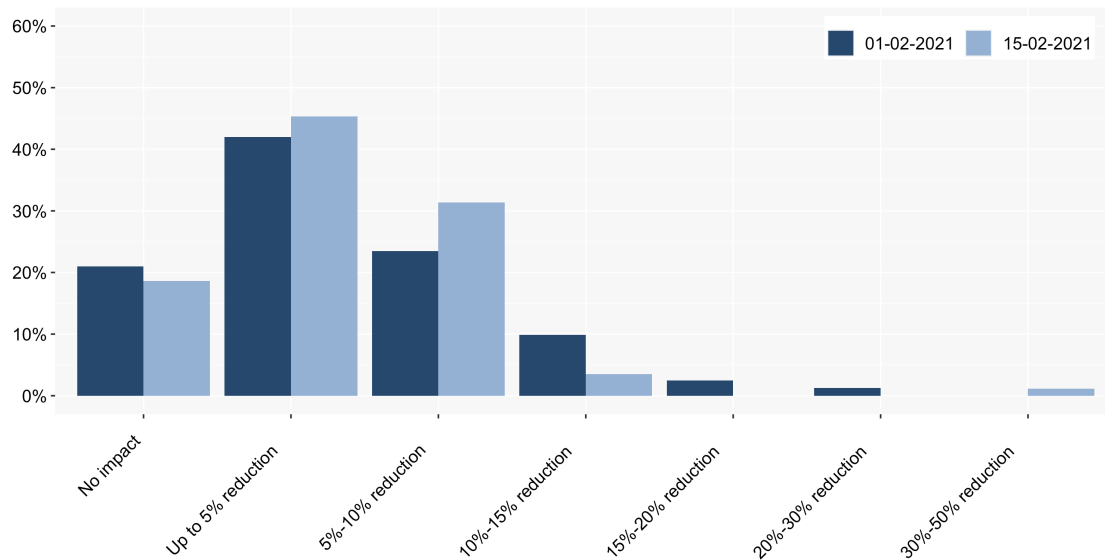


## Disposal: reasons for service changes



- The **effects of social distancing** again form the most common cause for disruption to disposal services that LAs provide in the W/C 15 February 2021. This was reported by 22% of responding authorities, compared to 27% in the previous survey W/C 1 February.
- **Staff absence due to self-isolation** is reported as a cause for disruption by 8% in the W/C 15 February 2021, down from 14% in the previous survey.
- **Staff absences due to sickness and major increases in service demand** are both highlighted by 5% of reporting LAs in the W/C 15 February 2021, a decrease for both compared to the last survey (where it was 6% and 10% respectively).

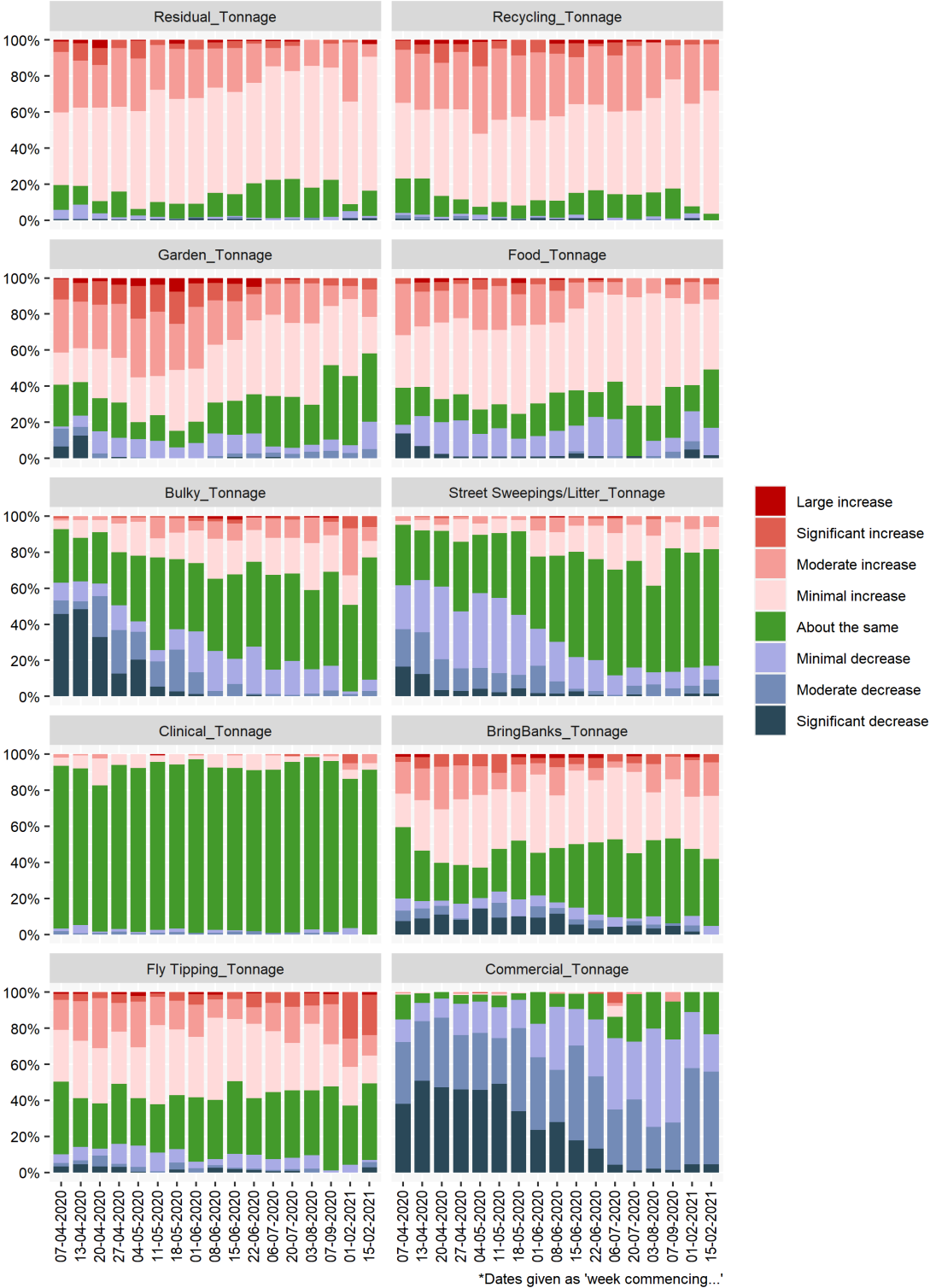
## Staff Absence Levels



- In total, 19% of responding authorities report are experiencing **'no impact'** on operational staffing levels in the W/C 15 February. This figure has decreased slightly since the last survey in the W/C 1 February (21%). This means that 81% are experiencing impacts on staffing levels, compared to 79% in the previous survey.
- 45% of respondents report an **'up to 5% reduction'** in the W/C 15 February. This is at similar levels to the previous survey (42%). Of those LAs responding to the survey, 31% report a **'5%-10% reduction'**.
- One authority reported a reduction level of **30%-50%**. In the previous survey, no instances of levels of disruption greater than 30% reduction were reported.

# Changes in Waste Arisings (excluding withdrawn services)

## Waste arisings: comparison to previous weeks<sup>1</sup>



## Waste arisings (most recent week)

	+100% increase	50- 100% increase	20-50% increase	0-20% increase	No impact	0-20% decrease	20-50% decrease	50-100% decrease
Residual	2%	0%	7%	74%	14%	1%	0%	1%
Recycling	0%	2%	26%	68%	4%	0%	0%	0%
Garden	0%	6%	15%	20%	38%	15%	5%	0%
Food	0%	3%	8%	39%	32%	15%	0%	2%
Bulky	0%	6%	8%	9%	68%	6%	3%	0%
Street Sweepings/Litter	0%	0%	6%	12%	65%	8%	8%	2%
Clinical	0%	0%	5%	3%	91%	0%	0%	0%
Bring Banks	0%	5%	19%	35%	37%	5%	0%	0%
Fly Tipping	1%	23%	11%	15%	42%	1%	3%	3%
Commercial	0%	0%	0%	0%	23%	21%	51%	5%

- **Residual:** More than four in five (83%) authorities represented in our survey in the W/C 15 February 2021, report higher than usual residual waste tonnages, down from 91% in the previous survey W/C 1 February. The percentage of authorities reporting residual tonnages to be 'about the same' has risen. In the previous survey this was 4%, compared to 14% now.
- **Recycling:** A large majority (96%) of authorities responding to our survey in the W/C 15 February 2021, report recycling waste tonnages to be greater than usual. This is slightly higher than the previous survey (93%). 68% of authorities reported increases in tonnages to be in the region of '0-20% greater than normal', which is higher than in the previous survey (57%).
- Around two in five LAs (41%) report **garden waste** tonnages to have increased in the W/C 15 February 2021. 38% report no impact, which is the same level as in the previous survey.
- Three in ten (32%) of authorities report **food waste** tonnages to be 'about the same' as typical in W/C 15 February 2021, a significant increase from the previous survey (14%). Greater than usual levels of food waste tonnages are reported by 59% of responding authorities, the same level as the previous survey.
- 68% of authorities in the W/C 15 February 2021 report **bulky waste** collected tonnages to be 'about the same', a large increase compared to the previous survey (49%).
- **Street sweepings/Litter:** Over six in ten responding authorities in the W/C 1 February 2021 (65%) report no impact on street sweeping/litter tonnages, similar to

the levels reported previously (W/C 1 February 2021). Of those remaining, 21% report lesser than usual tonnages, which is up from 15% compared to the last survey.

- The vast majority of authorities (91%) report collected **clinical waste** arisings to be at a similar level to usual. This percentage is lower than levels reported in the previous survey (83%).
- Over half of LAs in the W/C 1 February 2021 (59%) report greater than typical levels of collected waste from **bring banks**. 37% report waste arisings to be about the same from these sites, which is similar to the last survey.
- **Fly-tip clearance:** Half of respondents (50%) report greater than usual tonnages of collected fly-tipped waste, which is a decrease compared to 63% in the W/C 1 February 2021. 23% report an increase of over 100%, down slightly from the previous survey (26%). 42% report no impact, up from 33% in the previous survey.
- **Commercial:** 77% of responding authorities highlight a lesser-than-usual level of collected commercial waste tonnages in the W/C 15 February 2021, which is lower than the 88% reported in the W/C 1 February. A higher percentage of authorities (23%) report tonnages of commercial waste to be 'about the same as usual'. This is an increase compared to 11% reported in the W/C 1 February, but close to the level reported in the W/C 7<sup>th</sup> September 2020 (21%).

---

<sup>i</sup> The chart comparing changes to waste arising to previous weeks includes the following categories:

Large increase = +100% increase

Significant increase = 50-100% increase

Moderate increase = 20-50% increase

Minimal increase = 0-20% increase

About the same = No impact

Minimal decrease = 0-20% decrease

Moderate decrease = 20-50% decrease

Significant decrease = 50-100% decrease