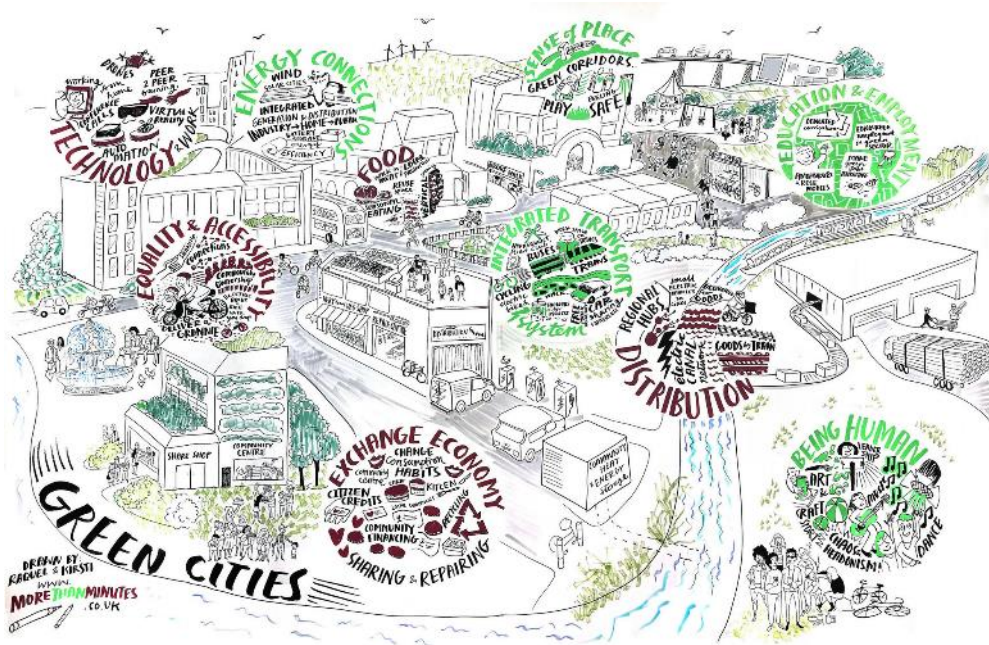


# Climate Action Co-benefits Toolkit

## ADEPT Midlands Climate Change Workshop

20<sup>th</sup> January 2020



**TWITTER:**

@Ashden\_org

@Grantham\_IC

#ClimateActionCoBenefits

**Grantham Institute  
for Climate Change**

An Institute of Imperial College London





## Ashden Award Winners Sustainable Cities



The National Energy Foundation and  
Energiesprong UK

High-impact retrofits

UK Award for Sustainable Buildings



SMV Green

A rickshaw revolution

Award for Sustainable Mobility



London Borough of Waltham Forest

Streets worth celebrating

Award for Clean Air in Towns and Cities



Alcaldía de Medellín

Growing a cooler city

2019 Award for Cooling by Nature



# Why is climate action important?



**We asked ourselves the question:**

**Does stopping climate change really mean just  
giving things up?**

# Our work in towns & cities





**TECHNOLOGY & WORK**

working from home  
CONFERENCES  
CALLS  
PEER 2 PEER training  
VIRTUAL REALITY  
AUTOMATION

**ENERGY CONNECTION**

WIND  
SOLAR CITIES  
INTEGRATED GENERATION & DISTRIBUTION  
INDUSTRY → HOME → PUBLIC  
BATTERY STORAGE  
energy efficiency

**SENSE OF PLACE**

GREEN CORRIDORS  
PLAY  
FEELING SAFE

**EDUCATION & EMPLOYMENT**

DEDICATED curriculum  
ENCOURAGE employment in green sector  
MAKE green jobs ATTRACTIVE  
AMBASSADORS & ROLE MODELS

**EQUALITY & ACCESSIBILITY**

SHARING connections  
Community Ownership  
ELECTRIC BIKES  
RIDE UNTIL you drop  
DELIVER A GRANNIE

**FOOD**

WALK IN LOCAL MEAT PRODUCTION  
REUSE SPACE  
SEASONAL EATING  
VERTICAL

**INTEGRATED TRANSPORT SYSTEM**

INTEGRATED BUSES  
WORK SPACE ON TRAINS  
CYCLING electric bikes  
WALK SHOWERS for cyclists  
FREE PUBLIC TRANSPORT CAR sharing PARKING

**DISTRIBUTION**

REGIONAL HUBS  
small ELECTRIC VEHICLES in cities  
DELIVER GOODS  
electric CANAL network  
GOODS by TRAIN

**EXCHANGE ECONOMY**

CHANGE Consumption HABITS  
community centre  
CITIZEN CREDITS  
LOCAL CURRENCIES  
KITCHEN  
RECYCLING

**BEING HUMAN**

LEADER SHIP  
ART & CRAFT  
MUSIC  
DANCE

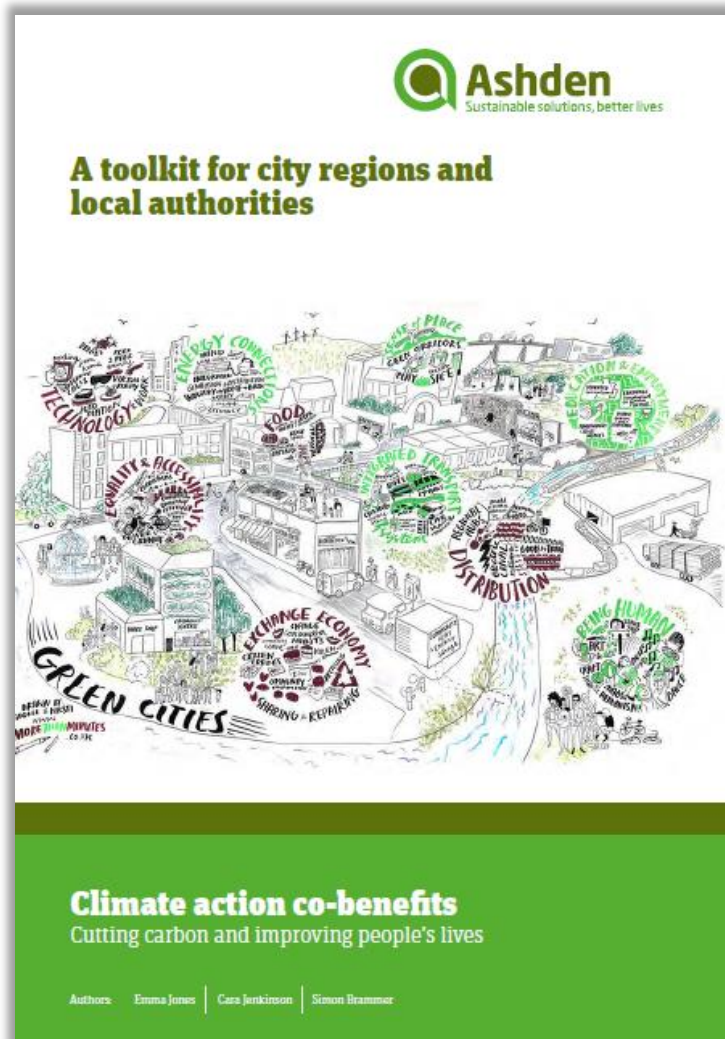






**Improving lives  
through liveable LOW-CARBON  
cities**







# 4 key co-benefits areas

**1 Introduction**

**2 Health and wellbeing**

**3 Economic opportunity and  
job creation**

**4 Resilience**

**5 Equity and social cohesion**

**6 Useful resources**

**7 Videos**

- Key facts
- Accessing facts that relate to your area
- The business case for action
- Links to statutory duties
- What role can decision makers play?
- Opportunities for action





## Accessing facts that relate to your area

Topic	Source	Description	Link
Travel	Gov.uk – National Travel Survey and Active Lives Survey	National walking and cycling statistics, including local authority-level data	<a href="https://www.gov.uk/government/collections/walking-and-cycling-statistics">https://www.gov.uk/government/collections/walking-and-cycling-statistics</a>
Air quality	UK Air: Air Information Resource	A library of data on air quality including local air pollution forecasts and modelled data	<a href="https://uk-air.defra.gov.uk">https://uk-air.defra.gov.uk</a>
	London Atmospheric Emissions Inventory (LAEI) 2013	Borough-level emissions and concentrations data	<a href="https://data.london.gov.uk/dataset/london-atmospheric-emissions-inventory-2013">https://data.london.gov.uk/dataset/london-atmospheric-emissions-inventory-2013</a>
Fuel poverty	Fuel poverty sub-regional statistics	Includes local authority-level data on the	<a href="https://www.gov.uk/government/collections/fuel-poverty-sub-regional-statistics">https://www.gov.uk/government/collections/fuel-poverty-sub-regional-statistics</a>



# Health - the business case for action



**The Active Wellbeing Society**

# Economic opportunity and job creation



**Repowering**

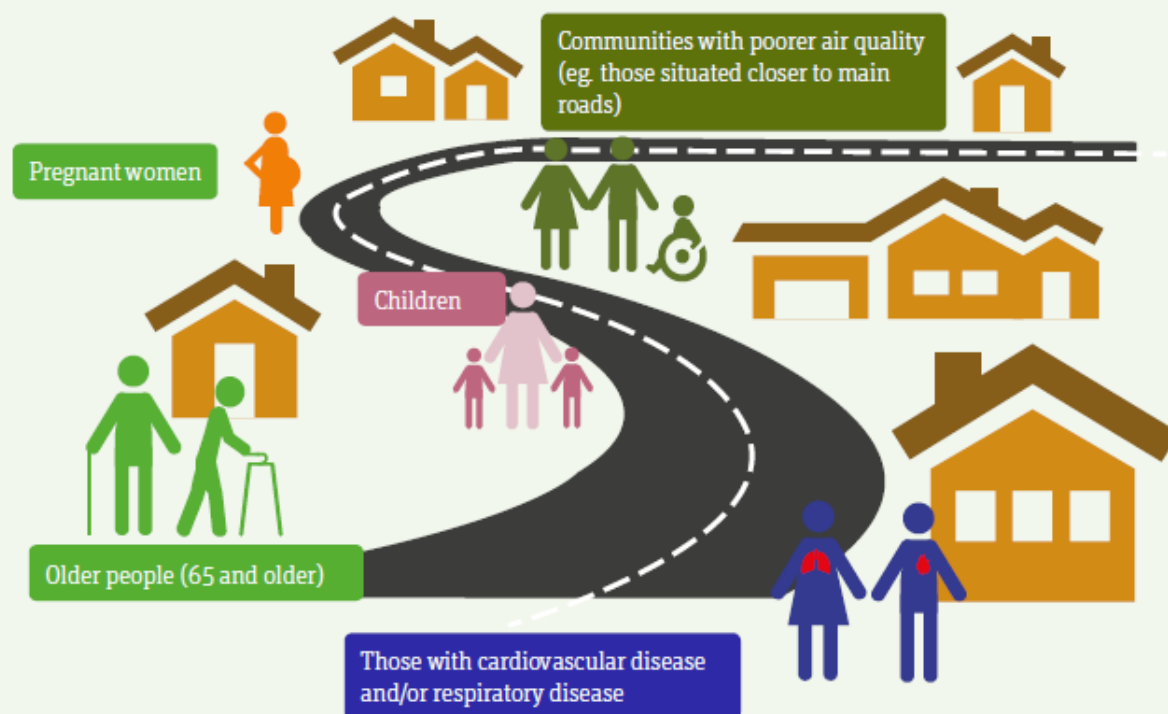


**Q-Bot**



# Equity and Social Cohesion

## GROUPS MOST VULNERABLE TO BEING AFFECTED BY POOR AIR QUALITY





	Carbon (>1000T pa)	Cost <£50k pa or cost positive	Health	Economy	Equity	Resilience
<b>RAISING MONEY</b>						
1. Introduce a workplace car parking levy and/or similar initiative to fund sustainable transport		★	★		★	
2. Set up a Carbon Offset Fund through Section 106 agreements		★				
<b>BUILDINGS</b>						
3. Enforce minimum energy efficiency standards in the private rental sector		★	★		★	★
4. Encourage 100 Energiesprong retrofits a year - initially in social housing and then rolling out to the private sector						
5. Retrofit council-owned homes to EPC C			★		★	★
6. Require higher than current national energy efficiency standards for privately built new homes		★				★
7. Encourage/enable retrofit all existing owner-occupied housing stock to EPC level C or above				★		★
8. Require homes built on council land to be Passivhaus standard or similar		★				★
<b>TRANSPORT</b>						
9. Introduce measures to encourage cycling	★		★			
10. Ban or discourage private cars from the city centre	★	★	★			



Action	Details	Carbon saving T/annum	Cost to the council
<b>RAISING MONEY</b>			
<b>1. Introduce a workplace car parking levy and/or similar initiative to fund sustainable transport</b>	A workplace levy is an annual fee paid by businesses with (e.g.) 10 or more employee-parking spaces. Income can be used to improve public transport and cycling infrastructure and to support businesses to encourage employees to leave their cars at home. Our figures are based on the Nottingham City Council workplace car parking levy. We've calculated the savings based on using the income to replace 10 diesel buses a year with electric ones.	<b>245</b> (based on using income to replace 10 diesel buses with EVs)	<b>£175k annual running cost; £3.5m generated annually</b> (based on Nottingham figures, but scaled down pro-rata with population; in practice, the costs may not be scalable on this basis)



11. Establish urban consolidation centres

6. Require higher than current national energy efficiency standards for privately built new homes

31. Through procurement, ensure the local authority supply chain is minimising carbon emissions

27. Increase tree cover on council owned land and on streets; update local planning strategies to increase tree cover across the council area, and ensure existing trees are properly protected

20. Upgrade the insulation and heating systems of council buildings, taking advantage of interest free finance available

# Climate Emergency Policy Asks of Central Government

---



# Thank you

---

**@Grantham\_IC**

**@Ashden\_org**

**#ClimateActionCoBenefits**

**Ashden.org**