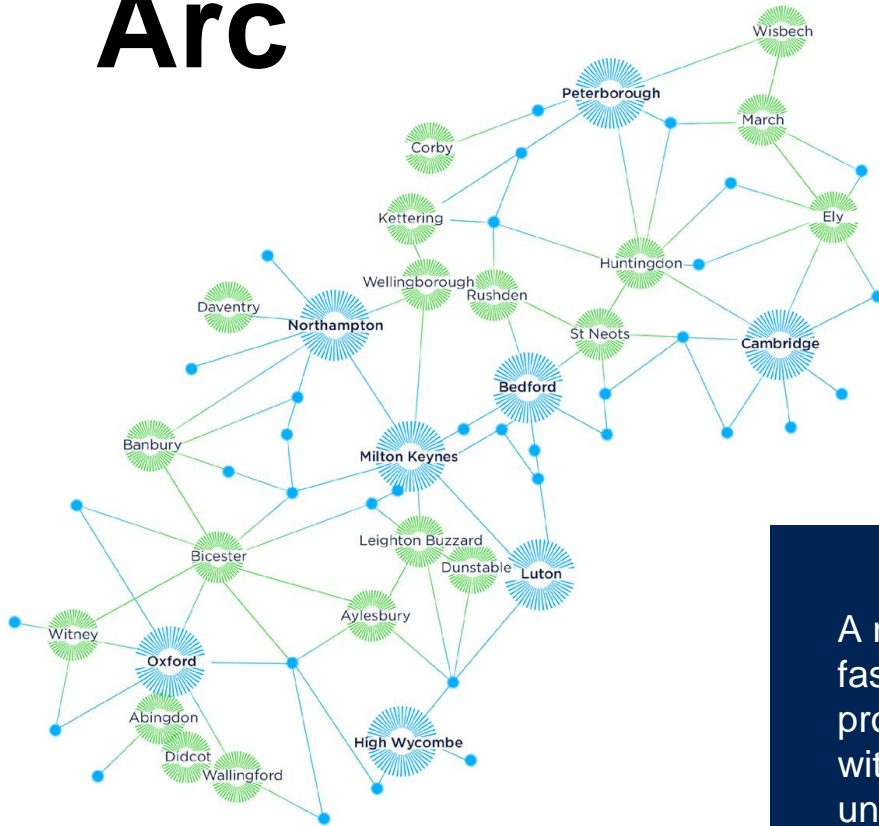




Oxford-Cambridge Arc

The Green Arc
29 October 2020

Oxford-Cambridge Arc



A network of successful, fast-growing & productive places, each with distinct potential, underlying specialisms, cultural attractions and heritage.



3.8 million residents

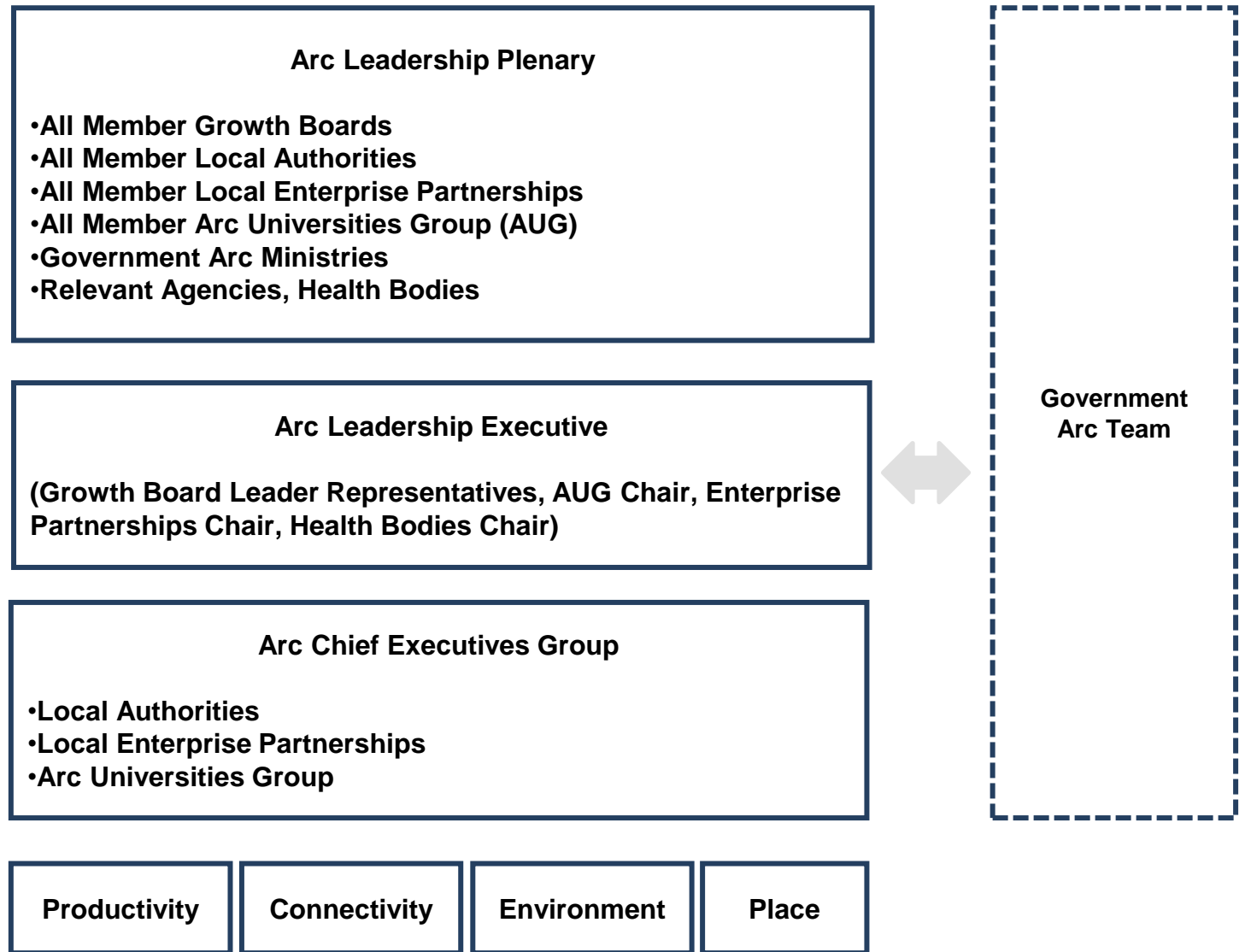
Current GVA p.a. of £111bn

2 million jobs

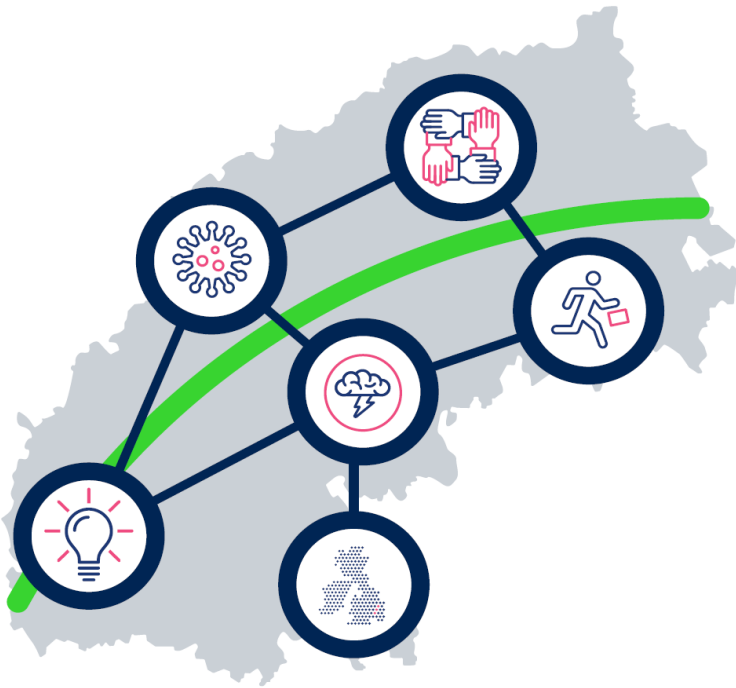
10 universities, contributing £13bn p.a. GVA

At centre of UK transport and logistics network, with easy connectivity to London, regional centres and an international gateway.

Arc leadership groups



Why?

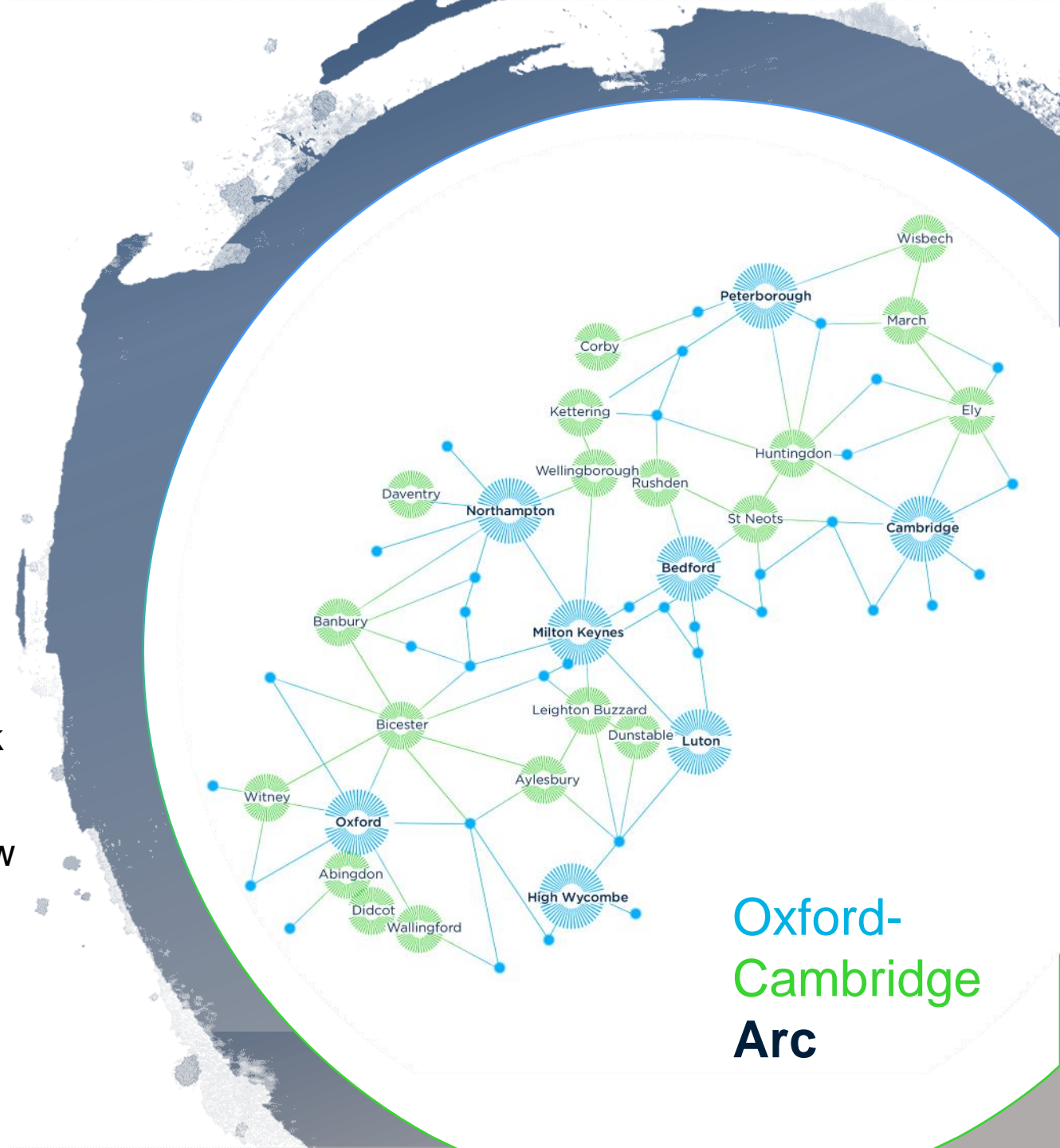



We continue to collaborate with Government on the establishment of an Oxford-Cambridge Arc Region to:

- Support the UK economy
- Legitimately seek to secure sustainable development
- Raise productivity, reduce inequalities and reduce pressure on current and future populations
- Ensure the Arc narrative does not have a singular obsession with housing – but rather thriving places
- Develop clarity and certainty based on evidence and public engagement
- Unlock significant funding – public and private - for infrastructure needed now and to support change
- Move to a more stable and committed funding model

Current Arc Leadership Groups' priorities

- Arc Economic Prospectus
 - pitch to CSR – recognition, investment, infrastructure
- Arc Joint Economic Recovery Strategy
 - Value-added to sub-regional and local strategies
- The “Green Arc”
 - Build on Local Natural Capital Plan work
- Arc Spatial Framework
 - Ensuring benefit for our existing and new communities
- Arc Public Engagement
 - with stakeholders and residents



A thick green curved line starts from the top left corner and curves downwards towards the right, ending near the top of the text box.

By 2050, the **Arc** will be the world leading place for high-value growth, innovation and productivity. A global hub where ideas and companies are generated and thrive, home to exemplary models of 21st century development, with a high-quality environment and outstanding quality of life, and with a strong economic focus that drives inclusive clean growth.

Strategic innovation infrastructure

- Life science innovation network
- Sustainable aviation
- UK space gateway
- Future mobility
- Zero-carbon energy



Economic potential: double GVA to £200bn p.a.

- Innovation-led growth to help solve major environmental, health and social challenges
- To deliver green-growth and better quality opportunities for residents and businesses
- >£4 investment return for every public £1

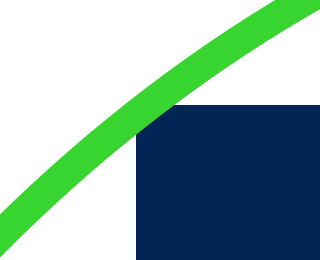
“The Oxford-Cambridge Arc is a global asset and national investment priority. With determined leadership and financial backing the Arc can leverage its innovation capability to drive regional growth, national prosperity and global inward investment into the UK.”

For the Arc to be a global hub for innovation, and home to exemplary models of green development that will inspire communities around the world



Creating the new economy

- **Global innovation hub:** world-renowned assets, talent and track record in globally significant discoveries and industrial breakthroughs
- **Transformative economic potential:** with investment, can better connect and realise potential of know-how and critical mass of assets
- **A Green Arc:** can be the testbed for new ways of living and working, demonstrating that net-zero carbon and environmental net-gain are achievable and economically beneficial



“It is well within the bounds of possibility that a “grand deal” for the **Arc** could be to return land to wildlife in a way that also frames and complements new homes and workplaces. That would be a great example of how growth can make us greener.

“The benefits of a sustainable approach to nature and transport towards our physical and mental wellbeing are increasingly clear. For example, jobs being created near to our homes can shorten travel times, encourage walking and cycling and improve our lifestyles.”

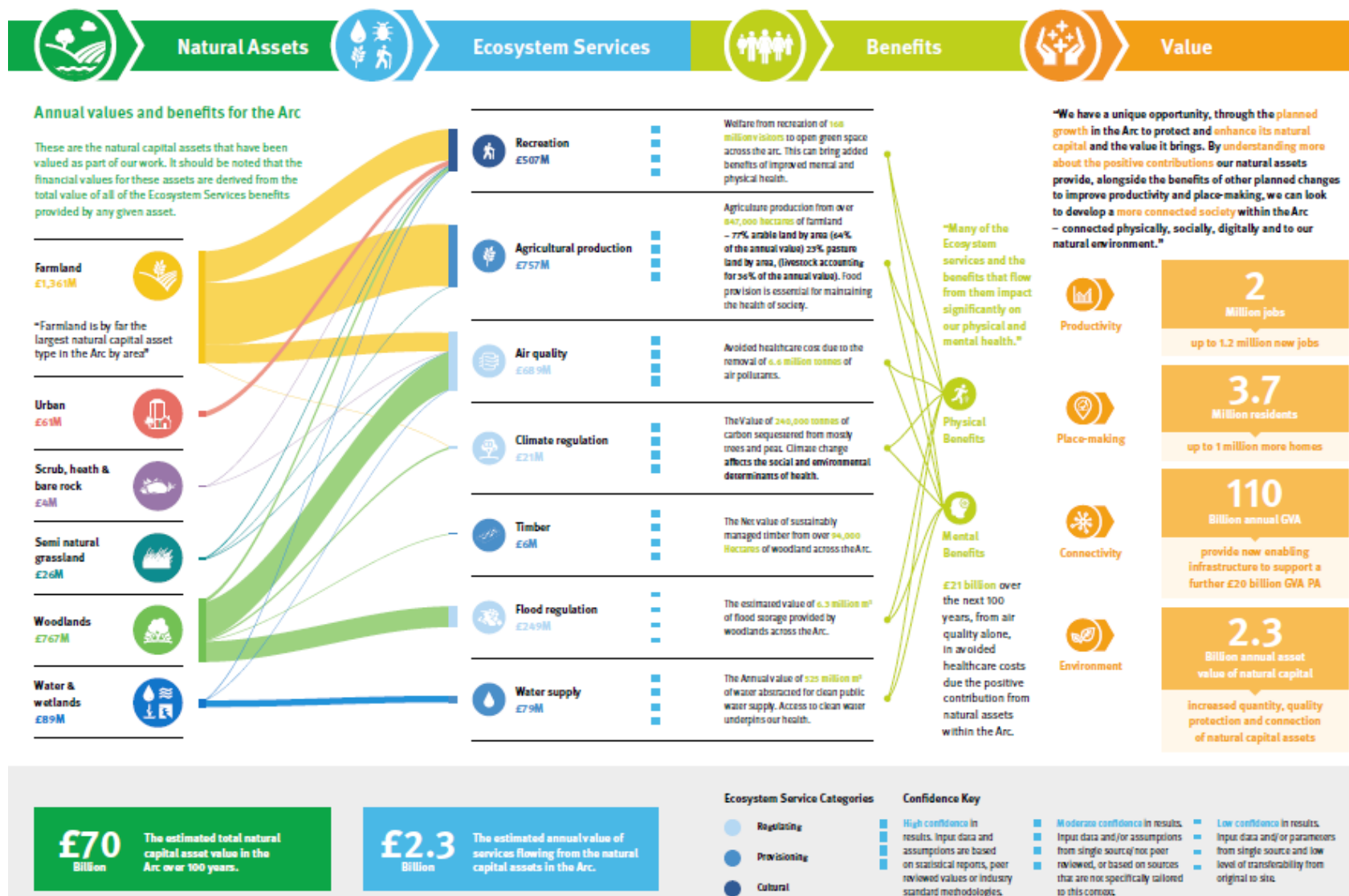
Peter Horrocks CBE, Chair SEMLEP

The foundations for the “Green Arc”

The OxCam LNCP can...

- | Provide **an overarching, integrated approach** to identifying environmental interventions, opportunities and risks to plan with partners to deliver **net gain** and **multiple benefits**
- | **Provide an evidence base** - Mapping and evaluating the Arc’s natural capital and ecosystem services to provide a consistent environmental baseline to measure change and plan **meaningful and integrated nature-based interventions**
- | Identify **the environmental, economic and social benefits** that flow from nature – and **explain their worth and potential to support blended finance**
- | **Help to de-risk growth** by enabling environmentally-focused and informed decision making - **facilitating green recovery, project speed and also delivering net zero**
- | **Support cross boundary and partnership working** – common aims, evidence and information

A snapshot of value and benefits...



The Green Arc – Arc Spatial Framework

- **Non statutory framework – national policy status?**
- **Overarching ambition/ vision** set out a clearly articulated, evidence-led, place-based but high level narrative
- **Focus on the three pillars of sustainability;**
- A ten year period (rolling) **delivery plan** set in a 30 year horizon
- A robust performance **monitoring framework**, with a set of measurable and meaningful indicators and targets
- Should take about **30 months to produce** – led by Government open to collaboration



Bev Hindle

Director Arc Leadership Group

bev.hindle@oxfordshire.gov.uk